

The Forest Stewardship Council

The Forest Stewardship Council® (FSC®)'s mission is to promote environmentally sound, socially beneficial and economically viable management of the world's forests.



Photo: Deramakot Forest, Sabah

The world's most credible and trusted sustainable forestry solution from forest to product

FSC helps forest managers, smallholders, and other stakeholders ensure thriving forest ecosystems and safeguard the livelihoods of forest communities. FSC's forestry standards, linked to a strict chain of custody certification, are a proven solution to fight the climate and biodiversity crises. The FSC logo – found on millions of products worldwide – is the most recognized mark for responsible forestry.

Forests are vital to life on Earth | We need forests more than they need us.

Forests regulate our **climate**, clean the **air** we breathe, and filter the **water** we drink. They provide **habitat** for more than two-thirds of terrestrial **wildlife and plants**. They are one of our most important resources, offering a **renewable** supply of the **materials** and **goods** we need for a more **sustainable** future.

A natural solution
for climate change

Support earth's
biodiversity

Essential for people
& communities

Provide renewable materials we
need for a sustainable future

FSC standards protect FORESTS.

FSC certification assures the highest requirements for biodiversity protection currently available for commercial forestry.

- ✓ Deforestation prevented
- ✓ Biodiversity protected
- ✓ Carbon storage enhanced
- ✓ Water and soil nurtured
- ✓ Degraded lands restored

FSC standards protect PEOPLE.

FSC offers the strongest social protection for workers and Indigenous Peoples.

- ✓ Fair wages & safe working environments
- ✓ No child or forced labour
- ✓ Indigenous rights respected
- ✓ Free, Prior, and Informed Consent (FPIC) on forest decisions
- ✓ Companies expelled if rights are violated



Forest managers

| FSC Forest Management certification

- for corporate and individual organizations
- for small, community and family forests



| FSC Ecosystem Services (ES) claims

ES claims help forest managers measure, verify and communicate the positive impact of their responsible forestry on carbon capture & storage, biodiversity, water, and more.



CO₂



Corporations, Financial Institutions, and other supporters

| Climate and Ecosystem Services solutions

Sponsor responsible forestry projects around the globe that address climate change, biodiversity loss, and other challenges. In return, receive verified, third-party evidence that your investments made a real and measurable impact.

System Integrity: FSC policies and procedures for safeguarding integrity are concentrated in 3 key areas:

- 1. Unacceptable activities:** A unique feature of FSC is the FSC Policy for Association. Under this policy, any organisation connected with FSC must not engage in unacceptable activities.
- 2. Supply chain integrity:** We lead initiatives around the globe to identify, eliminate, and prevent inaccurate and false claims made anywhere in the supply chain.
- 3. Trademark protection:** Through collaboration with network partners (i) Inaccurate use - request for correction (ii) False claim(s) – investigation (iii) Infringements - initiating legal case

FSC Policy for Association



FSC® solutions

Ways for forest managers, businesses, and consumers to maintain healthy forests forever.



Manufacturers, traders, sellers, & more

| FSC Chain of Custody certification

through the supply chain.



| FSC Project Certification

for buildings, structures, vessels, sculptures etc. made of FSC-certified wood.



Brands & Retailers

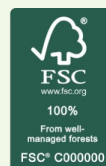
| FSC Promotional Licence

Use FSC trademarks to show your commitment to sustainable forestry.

FSC labels and trademarks

| A small label making a big impact

Behind every FSC label is a product that supports responsible forestry.



FSC Labels



Check for the tree FSC's "check tree" label is found on millions of forest-based products and verifies that they are sustainably sourced, from forest to consumer.



Look for the FSC label in:

Tyres | Sports equipment (skis, wetsuits, yoga mats and more) | Clothing & Shoes | Furniture, Home Décor & Kitchen Utensils | Personal Items (combs and more) | Paper products, Packaging, Tissue and Coffee Cups | Books & Art Supplies | Timber | Buildings & Structures | Non-Timber Forest Products (corks, bamboo, rattan, natural rubber gloves, nuts, fruits, and more)

Why choose FSC? | FSC is the **most credible sustainable forestry** solution



The FSC standards are among the most rigorous certification standards in the world



We're governed by economic, social, and environmental perspectives equally



Our standards are globally consistent and nationally adapted



FSC certification is a proven solution to tackle the climate and biodiversity crises



Our biodiversity protections are the most extensive



FSC claims meet strict criteria, upholding integrity



We're backed by some of the world's most reputable NGOs



We offer the strongest protection for workers



The FSC logo is the most recognised mark for responsible forestry



We champion the rights of Indigenous Peoples



Our business reach is the most extensive and brands trust us



We don't allow bad actors in our system

FSC Standards | **setting the bar for responsible forestry**

FSC forest management certification means committing to FSC **10 principles** to ensure your forest is managed in a way that's **economically viable, environmentally sound and socially beneficial**.

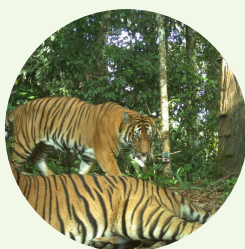
The 10 FSC Principles

1. comply with all applicable laws;
2. maintain or improve the social and economic well-being of workers;
3. uphold the rights of Indigenous Peoples;
4. maintain or improve the social and economic well-being of local communities;
5. manage their products and services in a way that maintains or improves their long-term economic viability, social benefits, and environmental benefits;
6. maintain, conserve, and/or restore the ecosystem services and environmental values of managed forests; and also avoid, repair, or mitigate negative environmental impacts;
7. establish a management plan that outlines their economic, environmental, and social policies and objectives;
8. demonstrate progress toward meeting these objectives;
9. maintain or improve high conservation values;
10. ensure that all management activities comply with FSC principles and criteria.

All FSC forest management standards are based on FSC's Principles & Criteria. At a regional/national level, indicators and verifiers are further developed in order to reflect the unique environmental and social requirements of the region.

FSC National Forest Stewardship Standard of Malaysia

FSC-STD-MYS-01.1-2021 EN



The FSC National Forest Stewardship Standard of Malaysia is applicable to all forest operations seeking FSC forest management certification in Malaysia

1. Developed based on FSC's Principles & Criteria, with locally adapted indicators.
2. Applies to **all types of forest** (including forest plantations), and is applicable at the *Management Unit* level, covering all scales and intensities of forest management operations.
3. First launched in April 2019. Revised version published in January 2022.
4. The scope of the FSC National Forest Stewardship Standard of Malaysia now includes both **timber and non-timber forest products (NTFPs)**. NTFPs within the scope include:

Sap or gland secretion: gum, resin, latex

Fruits (edible and non-edible)

Stem plants: rattan, bamboo, sap wood, heart wood

Medicinal herbs: leaves, rods, barks, roots, mushrooms

FSC solutions for small, low-intensity, and community forests

FSC offers a **portfolio of solutions** and **tools** these managers can use to reduce the cost and complexity of certification and open the door to new market opportunities.

Small and Low Intensity Managed Forests (SLIMF)

- **Small forests** | less than 40.46 ha (100 acres) in size.
- **Low intensity forests** | harvesting rate of less than 20% of the mean annual increment, and either an annual harvest or an average annual harvest of less than 5,000 cubic meters (averaged over the certificate lifetime).

Forests used solely for harvesting non-timber forest products also qualify as SLIMF regardless of size or intensity.

Group certification

Forest managers can group together and share their efforts, which makes it easier for community and family forests to become FSC certified. This streamlines requirements and audit procedures, reducing the overall cost and effort involved.

Continuous Improvement Procedure (CIP)

CIP allows small forest owners and communities to be initially certified based only on a subset of forest management requirements and offers flexible steps towards conformity with the remaining requirements within a defined timeframe.

Market access tools | FSC is developing a number of tools to help managers of community and family forests find and access markets for their products, including: screening tool; volume aggregator tool and economic viability assessor tool.



FSC Principles and Criteria for
Forest Stewardship



FSC National Forest Stewardship
Standard of Malaysia

Biodiversity Conservation

Carbon Sequestration & Storage

Watershed Services

Soil Conservation

Recreational Services

FSC Ecosystem Services Procedure

Forest Managers | Be recognised for your commitment to responsible forestry with FSC ecosystem services verification procedure.

Corporations, Financial Institutions and other supporters | Sponsor responsible forestry projects around the globe that address climate change, biodiversity loss, and other challenges, and receive verified, third-party evidence that your investments made a real and measurable impact. These claims can be used on your communication platforms.

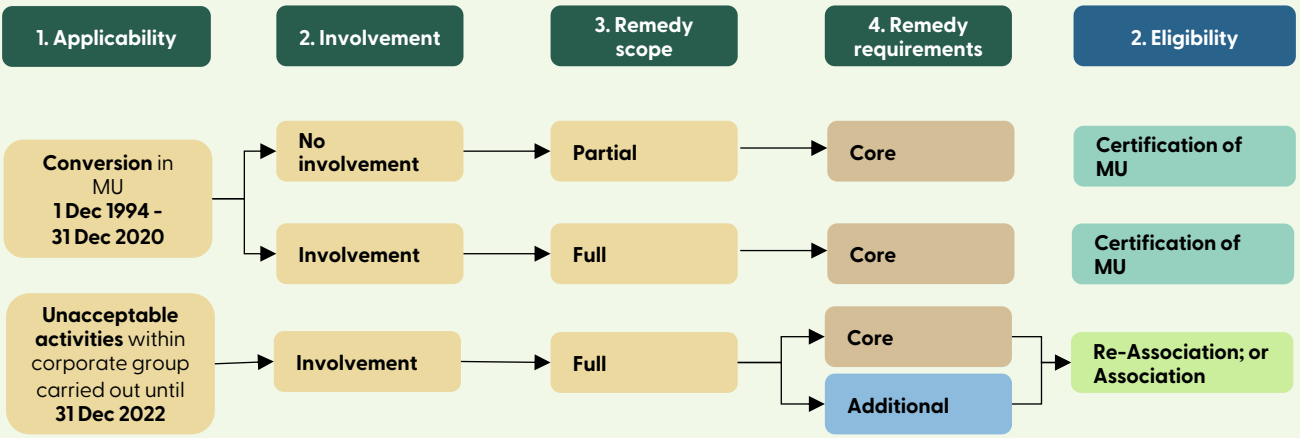
FSC Remedy Framework

FSC-PRO-01-007

Pathway for past converted forests and unacceptable activities to enter the FSC system

For past-converted areas | **Eligible** to apply for **FSC-certification** upon:

- Demonstrated **conformity** with **FSC Remedy Framework**; and
- Following **conversion-free** period in the Management Unit (MU) of **at least 5 years**



Consumers demand sustainability | From Concern to Action: New Research Reveals Consumers Prioritise Forests in Sustainable Shopping

Top three forest issues driving concern

Survey participants were asked to select the three issues that concern them the most, in order of importance. (13 issues)
Base: Total global sample (n=26,800)

Biodiversity loss

36%

Climate change

36%

Deforestation

34%

4 in 5 consumers who recognise FSC are more likely to trust a brand if FSC is present.

Choose an FSC certified product instead of an equivalent non-certified product

62%

Recommend FSC-certified products to friends and family

60%

Without healthy and resilient forests, we will lose the fight against climate change and biodiversity loss.

The future of forests is in our hands

Join our mission
to protect
the world's forests



Learn how you can join the FSC ecosystem and make a positive impact for forests and people.

FSC International



Website



Tools & Resources



FSC Malaysia



Website



Email



LinkedIn



Instagram



FSC Public Search

Access the FSC Public Search, which includes:

- FSC Certificates Public Dashboard
 - FSC Project Certificates
- FSC Promotional Licence Holders
- Recent & Upcoming FM Evaluations



Join us!

FSC®
Forest Week

Annual Campaign |
September

